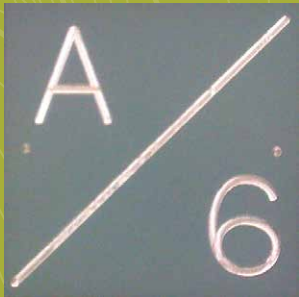


NAVIGATE LODGE FARM PARK R/M12

Permanent Orienteering for London

What to do

The aim of orienteering is to use the map to find your way to a series of locations, in the correct order. Each location is shown on the map as a numbered circle.



To help you find them a description of each is displayed on the answer sheet.

At each location there is a control marker. When you find the marker, make a note on the answer sheet of the number and letter that appear on it.

You can attempt the course on your own or as a team – try timing each person or team and see who completes the course the fastest!

Setting the map

A key skill in orienteering is setting the map. This means turning the map until the symbols on the map line up with the corresponding features on the ground.

This helps to ensure you set off in the right direction. Use tracks and paths to navigate to the controls.

Map Symbols

Use the key and map symbols to help you understand and read the map.

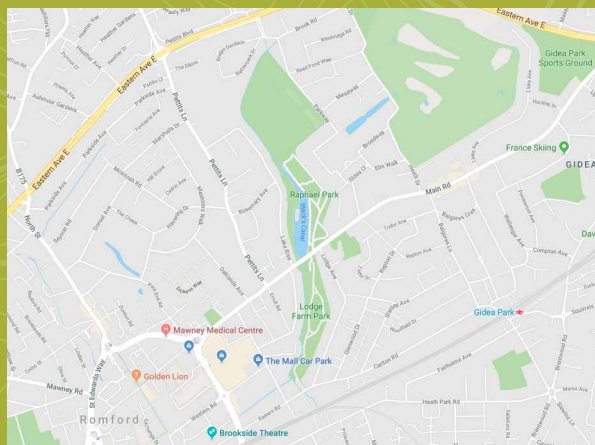
Fancy another Activity?

Follow the Thomas England markers to take part in the historic “Green Lung” walk.

A local trader and businessman, Thomas England was instrumental in developing various public improvement schemes in the borough. In 1937, Mr England donated 9.74 hectares of land for the creation of Rise Park creating a “Green Lung” connecting Romford in the south to Havering Atte-Bower in the north.

This long distance walk takes you through 4 Council-owned parks; Lodge farm Park, Raphael Park, Rise Park and Bedfords Park.

How to get to Lodge Farm Park



By Road

There are two car parks in Lodge Farm Park on Main Road and Carlton Road. Monday-Sunday, 08:00-18:30, 20p for 3 hours, 50p for 5 hours. Free outside of those hours.

By Bus

The 174 and 498 buses stop outside Lodge Farm Park. Both buses go to Gallows Corner and Romford station. Visit www.tfl.gov.uk for timetables

By Tube

Romford Rail Station (zone 6) is a 20 minute walk from Raphael Park and has TFL services to London Liverpool Street and Shenfield Station. London Overground trains to Upminster leave from platform 1.

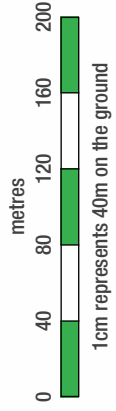
Lodge Farm Park is a medium public park covering 5.18 hectares. The owners of the Lodge Farm Estate, Roger Reede's Charity, sold several parcels of land to the then Romford Urban District Council who proceeded to use the land as a tip until 1961 when the Council agreed a scheme for the park which was completed in 1962. In 2008, Lodge Farm Park was awarded its first Green Flag and has retained the award for several years. Now the home of Havering's Miniature Railway Club, Lodge Farm Park is a popular park for families and events.

Easy Course ●○○

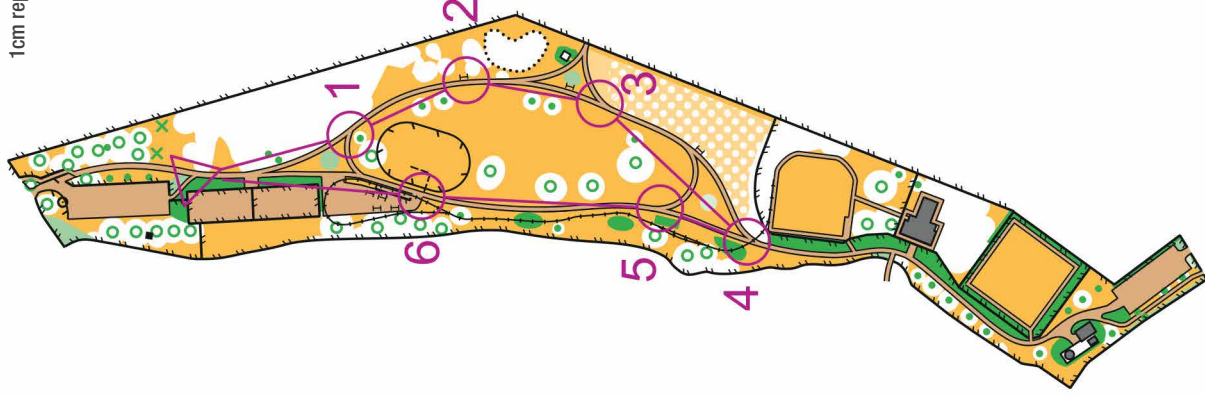
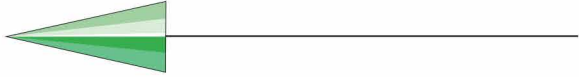
NAVIGATE LODGE FARM PARK RM2

Easy Course ●○○

Scale 1:4000 | Distance 600m



Magnetic North 2018



Number	Description	Code
Start	Path	
1	Path Junction	
2	Bench	
3	Path Junction	
4	Path Junction	
5	Path Junction	
6	Railway	
Finish	Path	

Key to map symbols

	forest – run
	forest – walk, or flower bed
	impassable
	mown grass
	rough open land
	scattered trees
	distinct vegetation boundary
	paved surface
	small footpath
	miniature railway
	fence, gate
	high fence
	prominent trees: large, small
	building, brick structure
	pole, seat



This map was surveyed and drawn using
OCAD 11 in May 2018 by Tom Edelstein,
© Crown Copyright, Licence 2018 100015287.
Map copyright: Josh Jenner 2018.
www.orienteeingcoach.com

Possession of this map does not imply right of access for orienteering or any other purpose. Permission must be obtained from the landowner. The representation of a track or path does not indicate a right of way.

